

Abloy Vending Locks

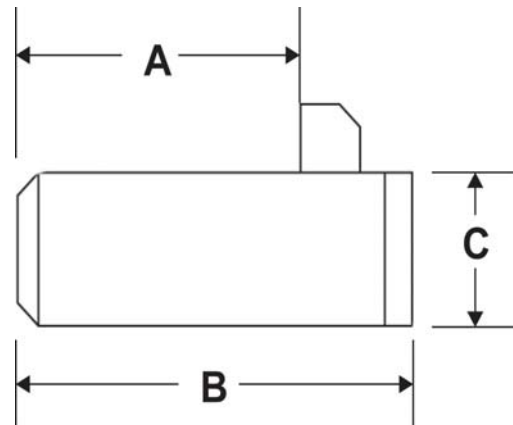


Abloy® High Security Vending Lock (T-handle cylinder) is designed to NAMA standards to fit most vending and bottling machines worldwide.

Abloy® uses a disc type lock cylinder with a patented key design. Millions of possible key combinations are available. The shell, face and latch are all made of steel to provide drill and pull resistance and other forms of physical attack. The Abloy® vending lock has over 4000lbs of pull strength.

The Abloy vending locks can be keyed alike, keyed different or keyed in groups.

Now available in the New Sentry Keyway



LSI Part No.	Locking Bolt	Keyway	A-Dim.	B-Dim.	C-Dim
		Abloy			
AB2290	Spring Bolt	Classic	1.12"	1.70"	.702"
AB2295	Dead Bolt	Classic	1.12"	1.70"	.702"
AB2291	Dead Bolt	Classic	1.12"	1.70"	.702"
AB2296	Spring Bolt	EXEC	1.12"	1.70"	.702"
AB2298	Dead Bolt	Sentry	1.12"	1.70"	.702"
AB2230	Dead Bolt	Sentry	1.12"	1.70"	.702"